

Activities Report for the quarter ended 30 June 2017

31 July 2017

Market Data

ASX Code: AL8
Share Price: \$0.73 (at 28/07/17)
Shares on Issue: 107,963,908
Market Capitalisation: \$78m
Options on Issue: 18,757,454

Board and Management

Nicolaus Heinen
Non-executive Chairman

Christopher Wanless
Chief Executive Officer

Donald Smith
Director & Chief Operating Officer

Tom Eadie
Non-executive Director

Brett Tucker
Company Secretary

Peter Geerds
Chief Geologist

Alderan Resources Limited

Ground Floor, 16 Ord Street,
West Perth, 6005, WA

www.alderanresources.com.au

For further information:

e: info@alderanresources.com.au
p: +61 8 9482 0560

ABN: 55 165 079 201

Highlights

- **Successful ASX listing following Alderan's heavily oversubscribed \$8.5m Initial Public Offer ("IPO") with strong institutional backing**
- **Commenced high definition induced polarisation survey at Frisco Project including electromagnetic survey at Accrington Prospect**
- **Agreement to expand Frisco Project through acquisition of the remaining 50.5% interest in seven claims ("Imperial Claims") at Accrington Prospect which cover extensive outcropping copper and zinc-bearing skarn**
- **Highlights of historical drilling⁺ on the Imperial Claims include:**

36.6m @ 1.23% Cu, 0.6% Zn (from 0m* to end of hole)

26.8m @ 1.40% Cu (from 0m*)

26.8m @ 1.01% Cu (from 12m* to end of hole)

41.5m @ 0.94% Cu, 0.39% Zn (from 0m* to end of hole)

- **118 further claims secured covering historic mines and base and precious metal occurrences at the northern end of the Frisco System**
- **10,000m drill program scheduled to start in early August.**

+ these drilling results are "historical" and "foreign" and were initially released in 1967 by the Bear Creek Mining Company; they are not able to be fully reported in accordance with the JORC Code. Further discussion is provided in the ASX announcement dated 19 July 2017.

Copper explorer Alderan Resources Ltd ("Alderan") is pleased to report on its activities for the quarter ended 30 June 2017.

Alderan listed on the ASX in June following a successful IPO that raised \$8.5m before costs. The IPO was led by BW Equities and received strong support from existing and new investors including several institutional investors resulting in the offer being heavily oversubscribed.

Post quarter-end, Alderan announced the expansion of its holdings over the Frisco Project located in Utah, USA, through the acquisition of a third-party interest in the Imperial Claims, and the lease and staking of 118 further claims.

The Frisco Project is a large mineralised porphyry system that occurs across an area of approximately 7km by 4km. Historical mining activities focused on extensive outcropping breccia pipes (Cactus) and skarns (Accrington/Horn) associated with an underlying porphyry system recently identified by Alderan at Cactus Canyon. Alderan's exploration activities represent the first time that a project-scale exploration program utilising modern exploration methods and knowledge of porphyry systems has been undertaken at Frisco.

IP and EM survey commenced

Alderan engaged Dias Geophysics to conduct a high definition IP survey over the entire Frisco Project (24.77km²), and an EM survey over the Accrington copper-zinc skarn prospect, which commenced in late June.

The IP survey is designed to complement existing datasets and to assist in the definition of current and new targets. The EM survey is to be conducted over the large Accrington skarn prospect with the objective to identify conductive bodies that may represent massive sulphide bodies. It is expected that both the surveys will be completed within 6-8 weeks.

Drilling to Commence in August

A 10,000m drilling program is set to commence in August at the Cactus Mine with a single drill rig before a second rig is mobilised in September. Drilling will also take place at the Accrington Prospect.

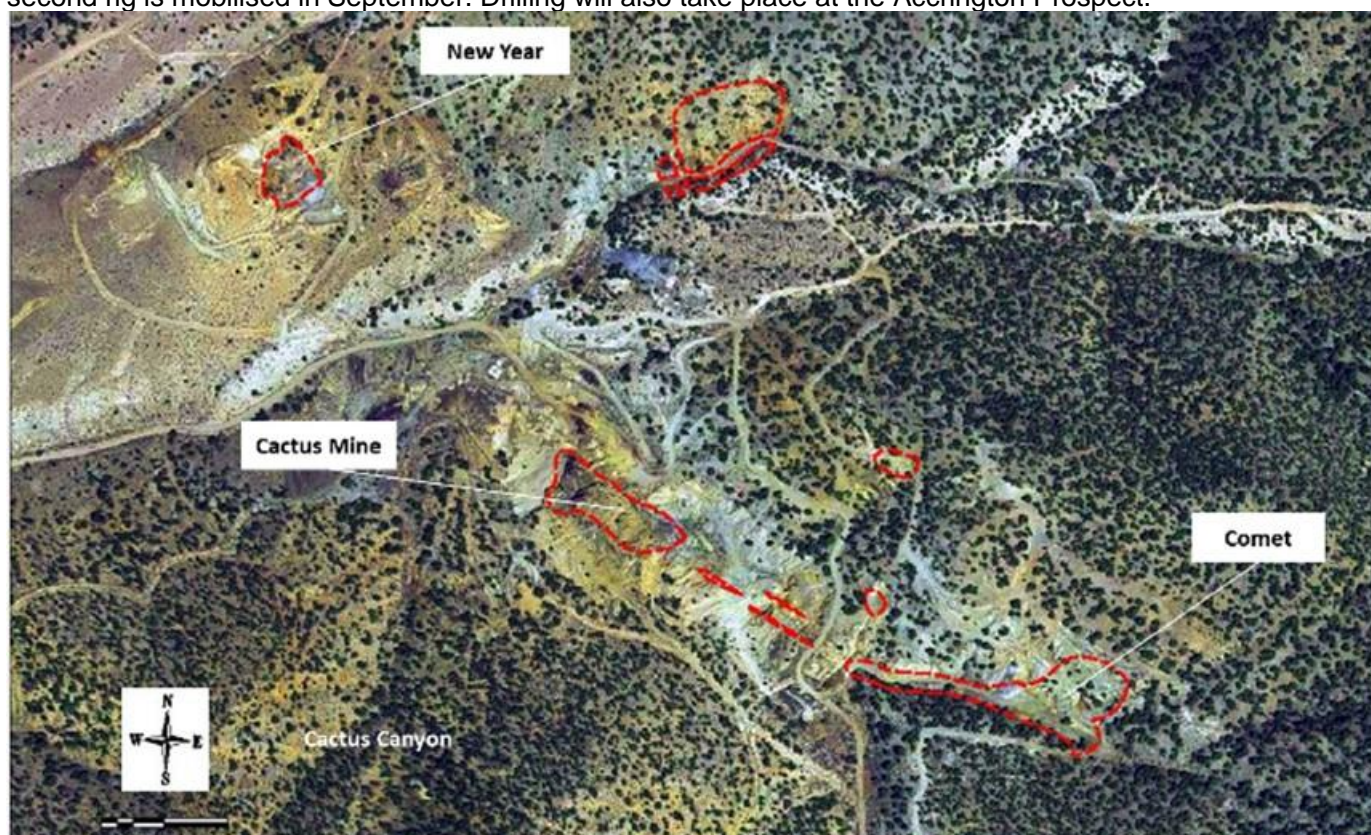


Figure 1 Outcropping and mineralised breccia (red lines) at the Cactus, Comet and New Year historical mines. Drilling is set to commence at the Catus Mine.

Agreement to acquire 50.5% interest in the Imperial Claims

As announced post-quarter end, Alderan entered an agreement with Shoshone Silver/Gold Mining Company to acquire a 50.5% interest in the Imperial Claims. The acquisition will result in Alderan holding 100% of the mineral rights over these claims, subject to a net smelter royalty to the landholder, as Alderan already holds rights to explore and mine on these claims through the Horn Lease Agreement with Horn Silver Mines Inc, which holds the remaining 49.5% interest. These claims comprise of a group of seven patented claims within the Accrington Prospect and cover the historical Imperial Copper Mine, and extensive outcropping copper-zinc skarns.

The Imperial Copper Mine produced modest amounts of copper between approximately 1908-1910 from four adits, which were from 30m to 420m long. In 1967, Bear Creek Mining Company drilled three core holes and 17 percussion holes. Highlights of historical drilling include:

- 36.6m @ 1.23% Cu, 0.6% Zn (from 0m* to end of hole);
- 26.8m @ 1.40% Cu (from 0m*);
- 26.8m @ 1.01% Cu (from 12m* to end of hole); and
- 41.5m @ 0.94% Cu, 0.39% Zn (from 0m* to end of hole).

*Percussion holes were conducted from underground adits.

Refer to Table 1 in the ASX announcement dated 19 July 2017 for full drilling results. These drilling results are “historical ” and “foreign” and were initially released in 1967 by the Bear Creek Mining Company; they are not able to be fully reported in accordance with the JORC Code. A Competent Person has not been able to undertake sufficient work to report the historical and foreign exploration results in accordance with the JORC Code. Full details are available in the ASX announcement dated 19 July 2017.

The Imperial Claims form part of the recently commenced project-scale induced polarisation survey as announced on 28 June 2017, with follow-up electromagnetic lines over the prospect.

Key terms of the Imperial acquisition are:

- Payment of \$120,000 (USD) on satisfaction of the closing conditions, \$120,000 (USD) on the anniversary of the closing date of the agreement and the balance of \$350,000 (USD) on the second anniversary of the closing date of the agreement; and
- Shoshone hold the right to a 1.25% net smelter royalty on the Imperial Claims; however Alderan may extinguish this royalty by paying the consideration in full by 31 December 2018.

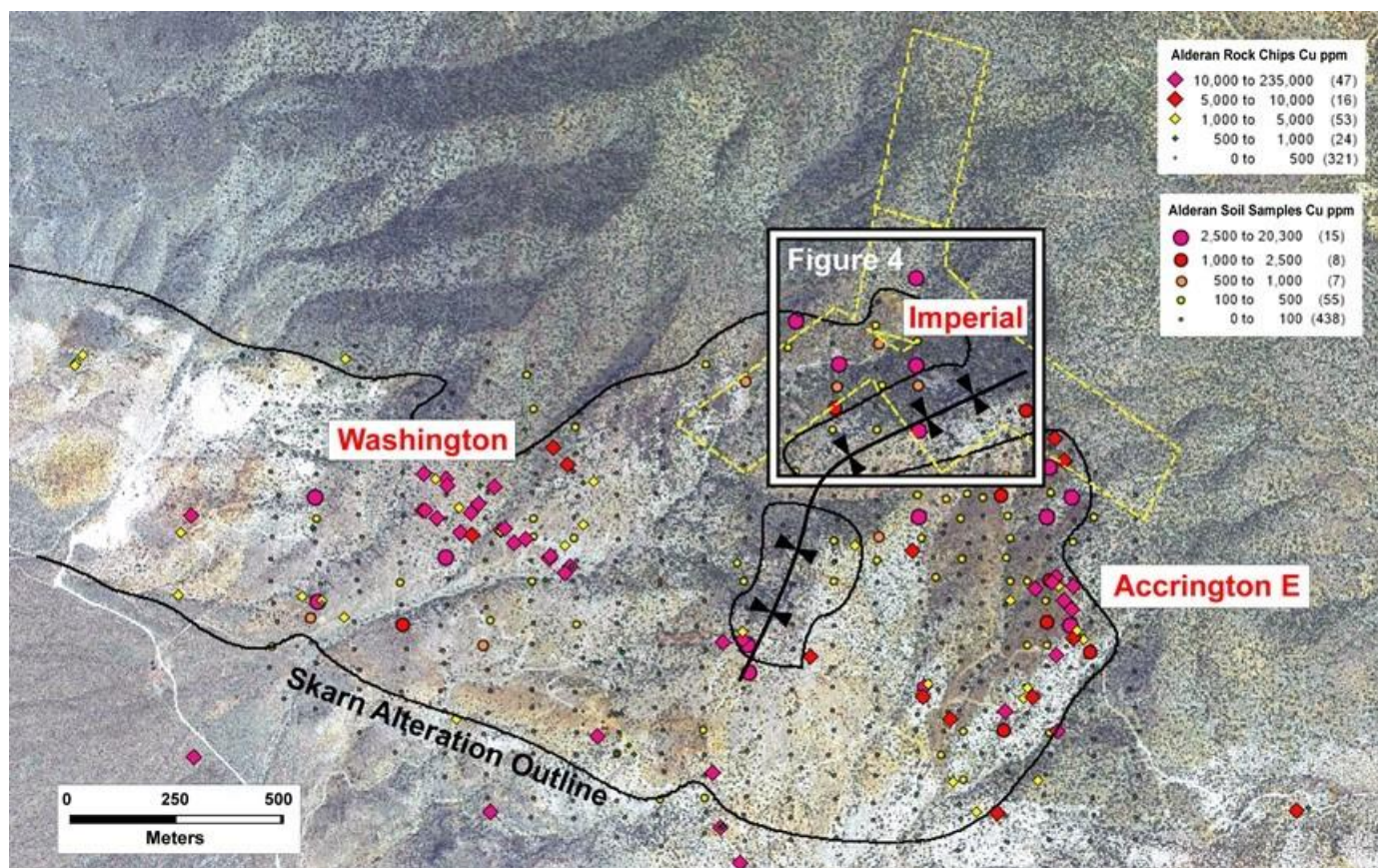


Figure 2 Overview map of the Accrington Skarn Project showing the Imperial Claims (yellow dashed lines), prospect names, skarn alteration outline, rock chip (squares) and soil (circles) geochemical samples collected by Alderan. Note the continuation of mineralisation on surface from Imperial towards Accrington E.

Lease entered into over 44 patented claims (“Northern Carbonate Lease”)

Alderan, through its wholly owned subsidiary, Volantis Resources Corp (“Volantis”), has entered into a lease agreement with the owners of 44 patented claims which abut the Frisco Project to the north. Patented claims are privately owned land where the mineral rights are held by the private landowner. The agreement grants Volantis the right to explore for and mine minerals on the property. These claims cover almost predominantly carbonate sequences and include several historical workings such as the Indian Queen lead-zinc-silver mine.

The Company considers these claims to be prospective for skarn-hosted copper-zinc-lead-silver-gold and carbonate-hosted gold-silver deposits. Within airborne magnetic and radiometric data collected by Alderan, the Northern Carbonate Leases show a distinct magnetic high associated with surface alteration and outcropping mineralisation, interpreted to be a magnetite-rich part of a skarn at depth, similar to the magnetic signatures at Accrington, where Cu-Zn-Au-Ag bearing magnetite skarn has been mapped within a comparable magnetic high.

The Northern Carbonate Leases present a high priority exploration target for Alderan. The company plans to perform detailed mapping, geochemical sampling and an electromagnetic survey over the area covered by the Northern Carbonate Lease in order to identify priority targets for drilling.

Key terms of the lease agreement include:

- An initial and annual advance royalty fee of US\$10,000 per year for the first five (5) years of the lease;
- The right (held by Volantis) to extend the lease by further 10-year periods up to the 65th anniversary, subject to the continuing payment of the advance royalty payments which increase for each additional ten year term (an average of US\$30,000 per annum for the first 10-year extension and US\$40,000 per annum for each subsequent 10 year extension);
- Following the 65th anniversary the lease may be further extended provided the average royalty during the preceding 10-year term is in excess of US\$70,000 per annum;
- A net smelter royalty* of 3% to the landowner, with Volantis holding options to purchase 1/3 of the royalty (thereby reducing it to 2%) for the amount of US\$1,500,000;
- A right of first offer (held by Volantis) in the event that the Lessor desires to sell their interest in the property and lease; and
- Minimum expenditure commitments of US\$15,000 in the first year of the lease, rising to \$50,000 for the 50-year of the lease.

* no royalties are payable to the State or Federal Government on the patented claims.

74 unpatented claims staked by Alderan

Alderan, through Volantis, completed the staking and registration of an additional 74 unpatented claims. Unpatented claims are administered by the Federal Bureau of Land Management. Alderan’s rights to explore for minerals on these claims was granted on registration of these claims subject to normal permitting procedures for ground-disturbing activities.

These new claims cover potential extensions of the Frisco mineral system to the north and north-west, predominantly over carbonate sequences, increasing the potential for skarn development. Several documented historical base and precious metal occurrences and workings are known on the areas covered by the new claims.

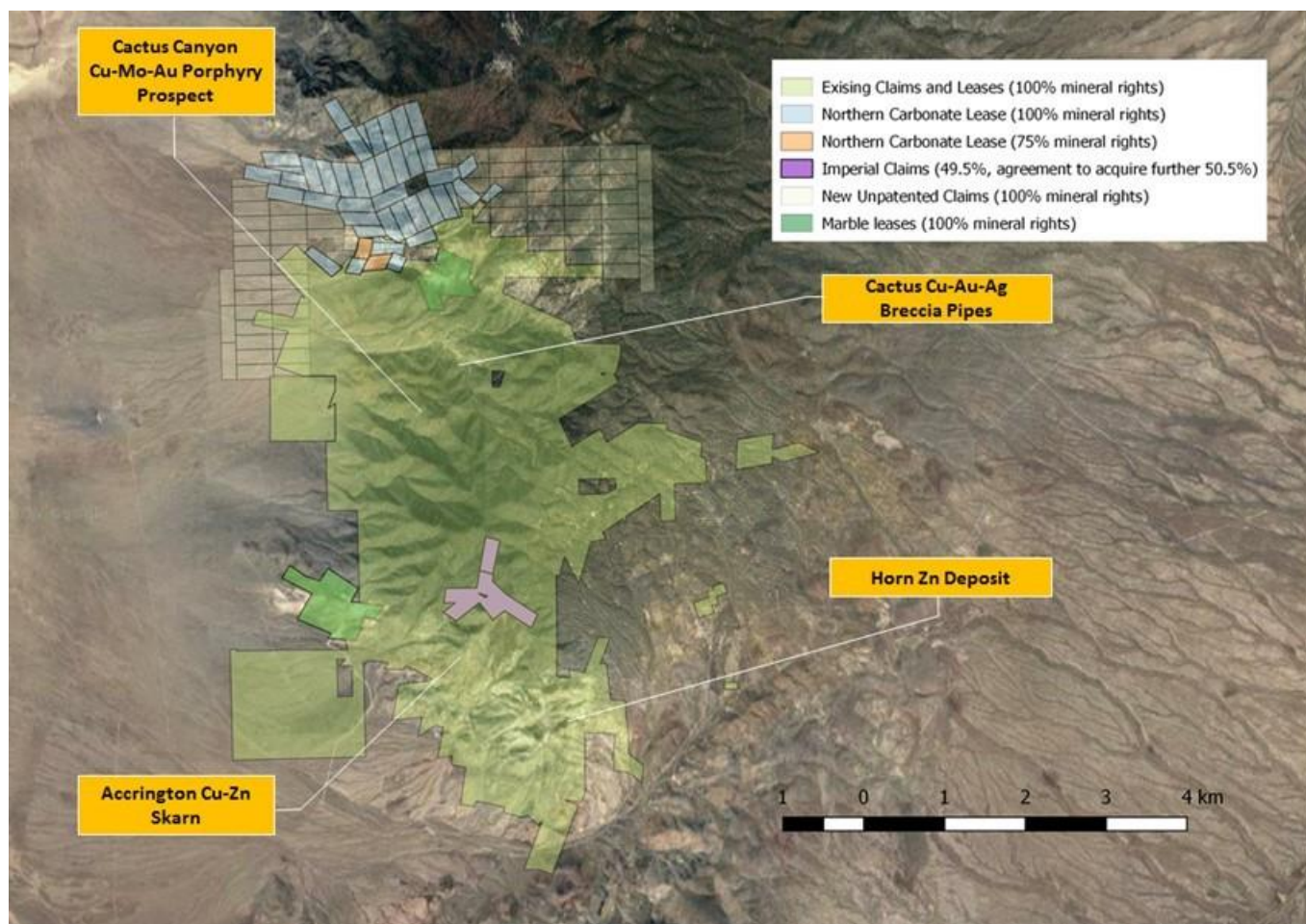


Figure 3 Frisco Project - Tenure Map

---ENDS---

Please direct enquiries to:

Nathan Ryan
NWR Communications
Mobile: 0420 582 887

Christopher Wanless
Chief Executive Officer
chris@alderanresources.com.au

Stay Connected

Interested investors and shareholders are encouraged to subscribe to the Company's social media channels using the links below:



Competent Persons Statement

The information in this presentation that relates to exploration targets, exploration results, mineral resources or ore reserves is based on information compiled by Peter Geerdts, a competent person who is a member of the Australian Institute of Geoscientists (AIG). Peter Geerdts is the Chief Geologist of Alderan Resources Limited. Peter Geerdts has sufficient experience that is relevant to the style of mineralisation and type of deposits under consideration and to the activity being undertaken to qualify as a Competent Person as defined in the 2012 edition of the JORC Code (JORC Code). Peter Geerdts consents to the inclusion of this information in the form and context in which it appears.

Mr Geerdts confirms that the information provided in this announcement provided under ASX Listing Rules Chapter 5.12.2 to 5.12.7 is an accurate representation of the available data and studies for the proposed exploration programmes that relate to this “material mining project”.

About Alderan Resources Limited

Alderan is a copper explorer with a focus on the Frisco Project, located in Utah, United States of America. The Frisco Project encompasses an area of significant historical mining activity with numerous old mines and workings across an area of approximately 7km by 4km. These include:

- the Cactus copper-gold-silver deposit and breccia pipe, one of several mineralised breccia pipes over an area of approximately 1000 m by up to 400 m. Modelling of magnetic survey data demonstrates that these pipes are likely connected at depth;
- the Accrington copper-zinc-silver-gold skarn, which hosts extensive mineralisation across an area of 1.8 km by 1.2 km; and
- the Horn zinc deposit, a historical lead-silver mine, which contains significant amounts of unmined high grade zinc.

The Company believes that these three deposits are genetically related to, and were formed contemporaneously with, underlying mineralised (copper-molybdenum-gold) porphyry intrusions. Work undertaken by the Company has confirmed the presence of a mineralised porphyry system beneath and adjacent to the Cactus breccia pipes.

Schedule of Claims Held at 30 June 2017

THE HORN PATENTED CLAIMS

Claim Name	Survey Number	Section(s)	Township	Range
022**	5946	15, 16	T27S	R13W
Absolom	5921	23	T27S	R13W
Accrington No. 1	5986	22	T27S	R13W
Accrington No. 2	5986	22,23	T27S	R13W
Accrington No. 3	5986	22	T27S	R13W
Accrington No. 4	5986	22	T27S	R13W
Accrington No. 5	5986	22,23	T27S	R13W
Accrington No. 6	5986	22	T27S	R13W
Accrington No. 7	5986	22	T27S	R13W
Antwerp	43	15	T27S	R13W
Bonanza	49	23	T27S	R13W
Castle Rock Lode Part A	6202	24	T27S	R13W
Castle Rock Lode Part B	6202	24	T27S	R13W
Champion	5986	22	T27S	R13W
Congress No. 2	5986	23	T27S	R13W
Copper Glance No. 1	5295	15	T27S	R13W
Copper Glance No. 2	5295	15	T27S	R13W
Copper Glance No. 3	5295	15	T27S	R13W
Cupric Fraction	6481	15,16	T27S	R13W
Cupric**	5946	16	T27S	R13W
Dick Taylor	3399	23	T27S	R13W
Dolly Mack	61	23,26	T27S	R13W
Dolly Mack Fraction	5921	23	T27S	R13W
Drum	5986	22	T27S	R13W
Drum No. 1	5986	22	T27S	R13W
Drum No. 2	5986	22	T27S	R13W
Dumbarton Lode	73	14, 23	T27S	R13W
Emporia	5921	26	T27S	R13W
Emporia No. 7	5986	22,27	T27S	R13W
Emporia No. 8	5986	22,27	T27S	R13W
Emporia No. 9	5986	23,26	T27S	R13W

Claim Name	Survey Number	Section(s)	Township	Range
Emporia No. 10	5986	26	T27S	R13W
Emporia No. 11	5986	26	T27S	R13W
Emporia Fraction	5921	26	T27S	R13W
Florida	42	15	T27S	R13W
Fraction (aka Elinore Fraction)	5303	2	T27S	R13W
General Warner**	5946	16	T27S	R13W
George Dewey	5986	22,23	T27S	R13W
Grampian	51	23	T27S	R13W
Grampian Smelter	40	13	T27S	R13W
Granite*	72	15	T27S	R13W
Gulch & Switch	6356	23	T27S	R13W
Harrison**	5946	16	T27S	R13W
Hedges Fraction*	4751	15	T27S	R13W
Hope Lode	54	23	T27S	R13W
Horn Silver Apex No. 1	5921	23	T27S	R13W
Horn Silver Apex No. 2	5921	23	T27S	R13W
Horn Silver Apex No. 3	5921	23	T27S	R13W
Horn Silver Apex No. 4	5921	23	T27S	R13W
Horn Silver Apex No. 5	5921	23	T27S	R13W
Horn Silver Apex No. 7	5921	22, 23	T27S	R13W
Horn Silver Apex No. 8	5921	23	T27S	R13W
Horn Silver Apex No. 9	5921	23	T27S	R13W
Horn Silver Apex No. 10	5921	22	T27S	R13W
Horn Silver Apex No. 11	5921	23	T27S	R13W
Horn Silver Apex No. 12	5921	23	T27S	R13W
Horn Silver Apex No. 13	5921	26	T27S	R13W
Horn Silver Apex No. 14	5921	22	T27S	R13W
Horn Silver Extension	5921	23	T27S	R13W
Horn Silver Fraction	5989	23	T27S	R13W
Horn Silver Millsite	38B	13	T27S	R13W
Horn Silver Mine	38A	23	T27S	R13W
Humbug	5922	22	T27S	R13W
Humbug No. 1	5922	22	T27S	R13W
Independence No. 1	5921	26	T27S	R13W
Independence No. 3	5921	26	T27S	R13W
Jay Hawker	60	23	T27S	R13W

Claim Name	Survey Number	Section(s)	Township	Range
Jennie Fraction	6170	22	T27S	R13W
King Bird	5265	31	T26S	R13W
King David	5921	23	T27S	R13W
Lady Franklin	3400	26	T27S	R13W
Lady Franklin Fraction	5921	26	T27S	R13W
Lady Washington	3401	23	T27S	R13W
Little Dick	5921	23	T27S	R13W
Massachusetts*	65	15	T27S	R13W
Millsite No. 1	58	13	T27S	R13W
Millsite No. 2	59	13	T27S	R13W
Nineteen Hundred	4655	23	T27S	R13W
Oil City*	4749	15	T27S	R13W
Old Warrior	5921	23	T27S	R13W
Quartzite No. 2*	71	14,15	T27S	R13W
Quartzite*	66	14	T27S	R13W
Reciprocity	5986	22	T27S	R13W
Reciprocity No. 1	5986	22	T27S	R13W
Reciprocity No. 3	5986	22	T27S	R13W
Relief No. 2**	6483	16	T27S	R13W
Relief**	6482	16	T27S	R13W
St. Louis No. 1	5986	22,23	T27S	R13W
St. Louis No. 2	5986	23	T27S	R13W
St. Louis No. 3	5986	23	T27S	R13W
St. Louis No. 4	5986	23	T27S	R13W
St. Stephen No. 2	5921	23	T27S	R13W
Sumner Lode	74	23	T27S	R13W
Sunbeam Mine	5922	15,16,21,22	T27S	R13W
Sunbeam No. 1	5922	21,22	T27S	R13W
Transcendent*	5946	16	T27S	R13W
Utah No. 1	5986	22	T27S	R13W
Utah No. 2	5986	22	T27S	R13W
Utah No. 3	5986	22	T27S	R13W
Vorheas*	4750	15	T27S	R13W
Warner No. 2**	6480	16	T27S	R13W
Washington	5946	15	T27S	R13W
Washington No. 2	5946	15, 22	T27S	R13W
Washington No. 3	5946	15	T27S	R13W

Claim Name	Survey Number	Section(s)	Township	Range
Washington No. 4	5946	15	T27S	R13W
Washington No. 5	5946	22	T27S	R13W
Washington No. 6	5946	15	T27S	R13W
Washington No. 7	5946	15	T27S	R13W
Washington No. 8	5946	15,22	T27S	R13W
Washington No. 10	5946	15	T27S	R13W
Young America	70	23	T27S	R13W

* These claims have an undivided portion owned by Horn Silver Mines Inc., with the remainder owned by a third party. Accordingly, Volantis's leasehold interest covers only that portion owned by Horn Silver Mines Inc.

** These claims are subject to a March 1, 2010 lease from Horn Silver Mines Inc. to Great American Resources, LLC.

Note: The listed township and ranges are all according to the Salt Lake Base & Meridian. The section numbers are listed for convenience in locating a particular claim and do not indicate that the entirety of a particular claim lies within the listed section or sections. All of the claims are located in the Pruess or San Francisco Mining Districts except for the King Bird Claim, which is located in the Beaver Lake Mining District. Most of the mining claims were located and surveyed before the area was surveyed according to the public land survey system. Thus, a formal, updated survey would be necessary to precisely locate the claims within the public land survey system.

THE CACTUS PATENTED CLAIMS

Claim Name	Survey Number	Section(s)	Township	Range
Alturas	5303	2	T27S	R13W
Anaconda Mining Claim	4673	3	T27S	R13W
Anchor No. 2*	5118	7	T27S	R12W
Antelope	5303	2	T27S	R13W
Antler	5303	2	T27S	R13W
Aransas Pass	4492A	3,4	T27S	R13W
Augusta	4611	3	T27S	R13W
Bandit	5827	3	T27S	R13W
Belmont Copper Silver	4492A	3	T27S	R13W
Blackbird No. 4	6010	2,11	T27S	R13W
Boston	4611	3	T27S	R13W
Buckhorn	5303	2	T27S	R13W
Burro	5393	10	T27S	R13W
Burro No. 1	5826	10	T27S	R13W
Burro No. 2	5826	10	T27S	R13W
Burro No. 3	5393	10	T27S	R13W

Burro No. 4	5393	3,10	T27S	R13W
Burro No. 5	5393	3,10	T27S	R13W
Cactus Extention	4492A	3	T27S	R13W
Cactus Millsite	39B	24	T27S	R13W
Cactus Mine U.S.	39A	3	T27S	R13W
Calliope	5303	2	T27S	R13W
Camille	4709	2	T27S	R13W
Comet	64	2, 3	T27S	R13W
Contact**	5303	3	T27S	R13W
Copper Spring Mine	4709	11,14	T27S	R13W
Copperopolis No. 3	4709	10	T27S	R13W
Copperopolis No. 4	4709	10	T27S	R13W
Copperopolis No. 5	4709	10	T27S	R13W
Copperopolis No. 6	4709	11	T27S	R13W
Copperopolis No. 7	4709	10	T27S	R13W
Copperopolis No. 8	4709	10	T27S	R13W
Copperopolis No. 9	4709	11	T27S	R13W
Cottonwood	4709	2,11	T27S	R13W
Daisy	4709	2	T27S	R13W
Dandy	5303	3	T27S	R13W
Divide**	5303	3	T27S	R13W
Dull Knife	5205	14	T27S	R13W
Dump	5825	4	T27S	R13W
Earth	5394	4	T27S	R13W
Elinore	5303	3	T27S	R13W
Elk	5303	2	T27S	R13W
Emerald	5303	2	T27S	R13W
Estelle	4611	3	T27S	R13W
EVA	5303	2	T27S	R13W
Excelsior	4709	11	T27S	R13W
Excelsior No. 2	4709	11	T27S	R13W
Excelsior No. 3	4709	11	T27S	R13W
Excelsior No. 4	4709	11,14	T27S	R13W
Excelsior No. 6	4709	11	T27S	R13W
Excelsior No. 7	4709	11	T27S	R13W
Franklin	5303	2	T27S	R13W
Frisco	5205	14	T27S	R13W
Frisco No. 3	5205	14	T27S	R13W

Gadfly*	5303	34	T26S	R13W
Good Fortune	5394	3	T27S	R13W
Good Luck	5394	3	T27S	R13W
Goodhope No. 1	5199	12	T27S	R13W
Goodhope No. 2	5199	12	T27S	R13W
Gray Horse	4709	11	T27S	R13W
Hesperides	5205	14	T27S	R13W
High	4709	11	T27S	R13W
High Point	5303	2,3	T27S	R13W
Hillside Lode	4706	3,10	T27S	R13W
Homestake No. 1	5118	7,12	T27S	R12-13W
Homestake No. 2	5118	7,12	T27S	R12-13W
Igneous	5303	3	T27S	R13W
Iron Chief	4673	2	T27S	R13W
Jinney No. 1	5394	4,33	T27S,T26S	R13W
Jinney No. 2	5394	33	T26S	R13W
Jinney No. 3	5394	4,33	T27S,T26S	R13W
Jinney No. 4	5394	4,33	T27S,T26S	R13W
Jupiter	5394	4	T27S	R13W
Lambson	5303	34	T26S	R13W
Laura	4611	3	T27S	R13W
Lookout No. 2	5199	11,12	T27S	R13W
Louise R	4611	3	T27S	R13W
Maggie No. 1	5303	34	T26S	R13W
Maggie**	5303	34	T26S	R13W
Mamie	5394	4	T27S	R13W
Mars	5394	4	T27S	R13W
Mascot	5827	3,4	T27S	R13W
May Queen	4709	11	T27S	R13W
May Queen No. 2	4709	11	T27S	R13W
Midvale Placer	4877	9	T27S	R9W
Moose	5303	3	T27S	R13W
Morrison No. 2	4876	8	T27S	R13W
Nana	4754	3	T27S	R13W
Neptune	5394	4	T27S	R13W
New Years	4492A	3	T27S	R13W
New Year's Spring	4492B	34	T26S	R13W
Olga	4709	11	T27S	R13W

Ophir	4492A	3	T27S	R11W
Pathfinder	4709	11	T27S	R13W
Puritan	4673	2,3	T27S	R13W
Purity	4492A	3	T27S	R13W
Quartz No. 1**	5303	34	T26S	R13W
Raleigh	5303	3	T27S	R13W
Regulator	4709	11	T27S	R13W
Regulator No. 2	4709	11	T27S	R13W
Royalist	5303	2	T27S	R13W
Ruby Lode	5205	14	T27S	R13W
San Antonio	4492A	3	T27S	R13W
Sapho	4709	11	T27S	R13W
Saturn	5394	4	T27S	R13W
Scorpion	5199	11	T27S	R13W
Scorpion No. 1	5199	11	T27S	R13W
Sun	5394	4	T27S	R13W
Texas Mining Claim	4492A	3,4	T27S	R13W
Townsite	4755	3,10	T27S	R13W
Townsite Extention	4753	10,11	T27S	R13W
Triumphant	5303	2	T27S	R13W
Tunnel	4611	3,4	T27S	R13W
U Bet	5303	2	T27S	R13W
Uncle Sam	4709	2	T27S	R13W
Union	4752	3	T27S	R13W
Venus	5394	4	T26S	R13W
Volcanic	5827	3	T27S	R13W
W. P. J.	4709	10	T27S	R13W
West Dip	4492A	3	T27S	R13W

* These claims have a subdivided portion owned by Horn Silver Mines Inc., with the remainder owned by a third party. Accordingly, Volantis's leasehold interest covers only that portion owned by Horn Silver Mines Inc.

** These claims are subject to a March 1, 2010 lease from Horn Silver Mines Inc. to Great American Resources, LLC.

Note: The listed township and ranges are all according to the Salt Lake Base & Meridian. The section numbers are listed for convenience in locating a particular claim and do not indicate that the entirety of a particular claim lies within the listed section or sections. All of the claims are located in the Pruess or San Francisco Mining Districts. Most of the mining claims were located and surveyed before the area was surveyed according to the public land survey system. Thus, a formal, updated survey would be necessary to precisely locate the claims within the public land survey system.

THE HORN UNPATENTED CLAIMS

Claim Name	BLM Serial Number	Section(s)	Township & Range	Location Notice (County Entry #)
SF 1	UMC426435	20;21	T27S R13W	258176
SF 2	UMC426436	20;21	T27S R13W	258177
SF 3	UMC426437	21	T27S R13W	258178
SF 4	UMC426438	21	T27S R13W	258179
SF 5	UMC426439	21	T27S R13W	258180
SF 6	UMC426440	21	T27S R13W	258181
SF 7	UMC426441	21	T27S R13W	258182
SF 8	UMC426442	21	T27S R13W	258183
SF 9	UMC426443	21	T27S R13W	258184
SF 10	UMC426444	21	T27S R13W	258185
SF 11	UMC426445	21	T27S R13W	258186
SF 12	UMC426446	21	T27S R13W	258187
SF 13	UMC426447	21	T27S R13W	258188
SF 14	UMC426448	21	T27S R13W	258189
SF 15	UMC426449	21	T27S R13W	258190
SF 16	UMC426450	21	T27S R13W	258191
SF 17	UMC426451	21;22	T27S R13W	258192
SF 18	UMC426452	21;22	T27S R13W	258193
SF 19	UMC426453	16;17;20;21	T27S R13W	258194
SF 20	UMC426454	16;21	T27S R13W	258195
SF 21	UMC426455	16;21	T27S R13W	258196
SF 22	UMC426456	16;21	T27S R13W	258197
SF 23	UMC426457	16;21	T27S R13W	258198
SF 24	UMC426458	16;21	T27S R13W	258199
SF 25	UMC426459	16;21	T27S R13W	258200
SF 26	UMC426460	16;21	T27S R13W	258201
SF 27	UMC426461	15;16;21;22	T27S R13W	258202
SF 28	UMC426463	10	T27S R13W	258269
SF 29	UMC426464	10	T27S R13W	258270
SF 30	UMC426465	10;15	T27S R13W	258271
SF 31	UMC426466	10;11	T27S R13W	258272
SF 32	UMC426467	10;11;14;15	T27S R13W	258273
SF 33	UMC426468	11	T27S R13W	258274
SF 34	UMC426469	11;14	T27S R13W	258275

Claim Name	BLM Serial Number	Section(s)	Township & Range	Location Notice (County Entry #)
SF 35	UMC426470	11;14	T27S R13W	258276
SF 36	UMC426471	15;16	T27S R13W	258277
SF 37	UMC426472	15	T27S R13W	258278
SF 38	UMC426473	15	T27S R13W	258279
SF 39	UMC426474	15	T27S R13W	258280
SF 40	UMC426475	15	T27S R13W	258281
SF 41	UMC426476	15	T27S R13W	258282
SF 42	UMC426477	15	T27S R13W	258283
SF 43	UMC426478	15	T27S R13W	258284
SF 44	UMC426479	10;15	T27S R13W	258285
SF 45	UMC426480	10;15	T27S R13W	258286
SF 46	UMC426481	15	T27S R13W	258287
SF 47	UMC426482	10;15	T27S R13W	258288
SF 48	UMC426483	15	T27S R13W	258289
SF 49	UMC426484	10;15	T27S R13W	258290
SF 50	UMC426485	15	T27S R13W	258291
SF 51	UMC426486	15	T27S R13W	258292
SF 52	UMC426487	14	T27S R13W	258293
SF 53	UMC426488	14;15	T27S R13W	258294
SF 54	UMC426489	14	T27S R13W	258295
SF 55	UMC426490	14	T27S R13W	258296
SF 56	UMC426491	14	T27S R13W	258297
SF 57	UMC426492	14	T27S R13W	258298
SF 58	UMC426493	14	T27S R13W	258299
SF 59	UMC426494	14	T27S R13W	258300
SF 60	UMC426495	14	T27S R13W	258301
SF 61	UMC426496	14	T27S R13W	258302
SF 62	UMC426497	15;22	T27S R13W	258303
SF 63	UMC426498	15	T27S R13W	258304
SF 64	UMC426499	15;22	T27S R13W	258305
SF 65	UMC426500	14;15	T27S R13W	258306
SF 66	UMC426501	14;15;22;23	T27S R13W	258307
SF 67	UMC426502	14;23	T27S R13W	258308
SF 69	UMC426503	14;23	T27S R13W	258309
SF 70	UMC426504	23	T27S R13W	258310
SF 71	UMC426505	14;23	T27S R13W	258311
SF 72	UMC426506	23	T27S R13W	258312
SF 73	UMC426507	14;23	T27S R13W	258313
SF 74	UMC426508	23	T27S R13W	258314

Claim Name	BLM Serial Number	Section(s)	Township & Range	Location Notice (County Entry #)
SF 75	UMC426509	14;23	T27S R13W	258315
SF 76	UMC426510	23	T27S R13W	258316
SF 77	UMC426511	15;22	T27S R13W	258317
SF 78	UMC426512	15;22	T27S R13W	258318
SF 79	UMC426513	15	T27S R13W	258319
SF 80	UMC426514	15	T27S R13W	258320
SF 81	UMC426515	10	T27S R13W	258321
SF 82	UMC428569	15	T27S R13W	259887
SF 83	UMC428570	15;22	T27S R13W	259888
SF 84	UMC428571	15;22	T27S R13W	259889
SF 85	UMC428572	15;22	T27S R13W	259890

Note: The listed township and ranges are all according to the Salt Lake Base & Meridian. The section numbers are listed for convenience in locating a particular claim and do not indicate that the entirety of a particular claim lies within the listed section or sections.

THE CACTUS UNPATENTED CLAIMS

Claim Name	BLM Serial Number	Section(s)	Township & Range	Location Notice (County Entry #)
CT 1	UMC426677	11	T27S R13W	258648
CT 2	UMC426678	11	T27S R13W	258649
CT 3	UMC426679	11	T27S R13W	258650
CT 4	UMC426680	11	T27S R13W	258651
CT 5	UMC426681	11	T27S R13W	258652
CT 6	UMC426682	11	T27S R13W	258653
CT 7	UMC426683	11	T27S R13W	258654
CT 8	UMC426684	11	T27S R13W	258655
CT 9	UMC426685	11	T27S R13W	258656
CT 10	UMC426686	11	T27S R13W	258657
CT 11	UMC426687	11;12	T27S R13W	258658
CT 12	UMC426688	11;12	T27S R13W	258659
CT 13	UMC426689	12	T27S R13W	258660
CT 14	UMC426690	12	T27S R13W	258661
CT 15	UMC426691	12	T27S R13W	258662
CT 16	UMC426692	12	T27S R13W	258663
CT 17	UMC426693	12	T27S R13W	258664
CT 18	UMC426694	12	T27S R13W	258665
CT 19	UMC426695	12	T27S R13W	258666
CT 20	UMC426696	12	T27S R13W	258667
CT 21	UMC426697	12	T27S R13W	258668
CT 22	UMC426698	12	T27S R13W	258669
CT 23	UMC426699	11;14	T27S R13W	258670
CT 24	UMC426700	11;14	T27S R13W	258671
CT 25	UMC426701	11;14	T27S R13W	258672
CT 26	UMC426702	11;14	T27S R13W	258673
CT 27	UMC426703	11;14	T27S R13W	258674
CT 28	UMC426704	11;14	T27S R13W	258675
CT 29	UMC426705	11;12;13;14	T27S R13W	258676
CT 30	UMC426706	12;13	T27S R13W	258677
CT 31*	UMC426707	2;3	T27S R13W	258678
CT 33	UMC426709	3;10	T27S R13W	258680
CT 34	UMC426710	2;3;10;11	T27S R13W	258681
CT 35	UMC426711	10	T27S R13W	258682

Claim Name	BLM Serial Number	Section(s)	Township & Range	Location Notice (County Entry #)
CT 36	UMC426712	10;11	T27S R13W	258683
CT 37	UMC426713	10;11	T27S R13W	258684
CT 38	UMC426714	3	T27S R13W	258685
CT 39	UMC426715	3;4; 33	T27S R13W; T26S R13W	258686
CT 40	UMC426716	3; 33;34	T27S R13W; T26S R13W	258687
CT 41	UMC426717	3;4	T27S R13W	258688
CT 42	UMC426718	3	T27S R13W	258689
CT 43	UMC426719	3;4	T27S R13W	258690
CT 44	UMC426720	3	T27S R13W	258691
CT 45	UMC426721	33	T26S R13W	258692
CT 46	UMC426722	4; 33	T27S R13W; T26S R13W	258693
SF 82	UMC426723	15;22	T27S R13W	258694
CT 47	UMC426967	9;10;15;16	T27S R13W	258845
CT 48	UMC426968	15;16	T27S R13W	258846
CT 49	UMC426969	10;15	T27S R13W	258847
CT 50	UMC426970	15	T27S R13W	258848
CT 51	UMC426971	10;15	T27S R13W	258849
CT 52	UMC426972	10;15	T27S R13W	258850
CT 53	UMC426973	9	T27S R13W	258851
CT 54	UMC426974	9	T27S R13W	258852
CT 55	UMC426975	9	T27S R13W	258853
CT 56	UMC426976	9	T27S R13W	258854
CT 57	UMC426977	9;10	T27S R13W	258855
CT 58	UMC426978	9;10	T27S R13W	258856
CT 59	UMC426979	10	T27S R13W	258857
CT 60	UMC426980	10	T27S R13W	258858
CT 61	UMC426981	10	T27S R13W	258859
CT 62	UMC426982	10	T27S R13W	258860
CT 63	UMC426983	10	T27S R13W	258861
CT 64	UMC426984	10	T27S R13W	258862
CT 65	UMC426985	10	T27S R13W	258863
CT 66	UMC426986	10	T27S R13W	258864
CT 67	UMC426987	10	T27S R13W	258865
CT 68	UMC426988	10	T27S R13W	258866
CT 69	UMC426989	10	T27S R13W	258867
CT 70	UMC426990	9	T27S R13W	258868
CT 71	UMC426991	9	T27S R13W	258869

Claim Name	BLM Serial Number	Section(s)	Township & Range	Location Notice (County Entry #)
CT 72	UMC426992	9;10	T27S R13W	258870
CT 73	UMC426993	10	T27S R13W	258871
CT 74	UMC426994	10	T27S R13W	258872
CT 75	UMC426995	10	T27S R13W	258873
CT 76	UMC426996	3;4;9;10	T27S R13W	258874
CT 77	UMC426997	3;10	T27S R13W	258875
CT 78	UMC428568	4;9	T27S R13W	259886
NW 1	UMC428552	33	T26S R13W	259870
NW 2	UMC428553	33;34	T26S R13W	259871
NW 3	UMC428554	34	T26S R13W	259872
NW 4	UMC428555	34	T26S R13W	259873
NW 5	UMC428556	34	T26S R13W	259874
NW 6	UMC428557	34	T26S R13W	259875
NW 7	UMC428558	34	T26S R13W	259876
NW 8	UMC428559	34	T26S R13W	259877
NW 9	UMC428560	34	T26S R13W	259878
NW 10	UMC428561	34;35	T26S R13W	259879
NW 11	UMC428562	35	T26S R13W	259880
NW 12	UMC428563	34;35	T26S R13W	259881
NW 13	UMC428564	2;35	T27S R13W; T26S R13W	259882
NW 14	UMC428565	2;3; 34;35	T27S R13W; T26S R13W	259883
NW 15	UMC428566	2; 35	T27S R13W; T26S R13W	259884
NW 16	UMC428567	34	T26S R13W	259885

* This Claim is likely void ab initio because it's the location monument is located on land owned by the State of Utah. Company is taking corrective actions with respect to the federal land covered by this claim.

Note: The listed township and ranges are all according to the Salt Lake Base & Meridian. The section numbers are listed for convenience in locating a particular claim and do not indicate that the entirety of a particular claim lies within the listed section or sections.